

# FOR LEASE

**3948 Lindell Blvd.  
St. Louis, MO 63110**



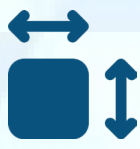
## Turn-Key Retail/Office Immediately Available Signage Available



Located in the heart of the Central West End Neighborhood



\$15.00/SF Full Service



1,581 square feet



10 total parking spaces  
5 are reserved parking spaces

**BRANDON K. SMART, CCIM | 314.254.0088 | [Brandon@bsmartequity.com](mailto:Brandon@bsmartequity.com)**  
**MALIK SIMMONS | 314.254.0088 | [Malik@bsmartequity.com](mailto:Malik@bsmartequity.com)**

No expressed or implied warranty or representation is made as to the accuracy of the information contained herein. This property is submitted subject to errors, omissions, change of price, withdrawal without notice, prior lease or sale and any other listing conditions imposed by the principals.





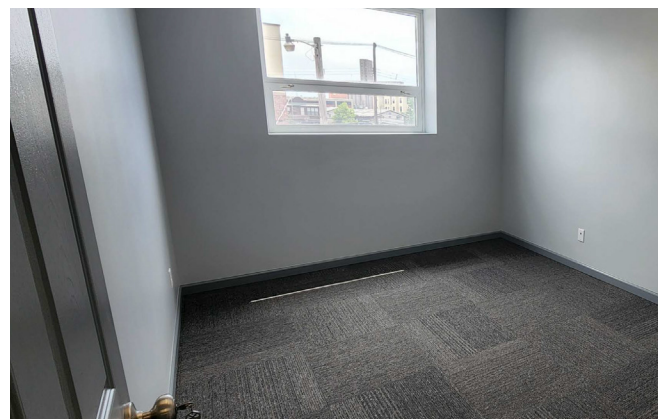
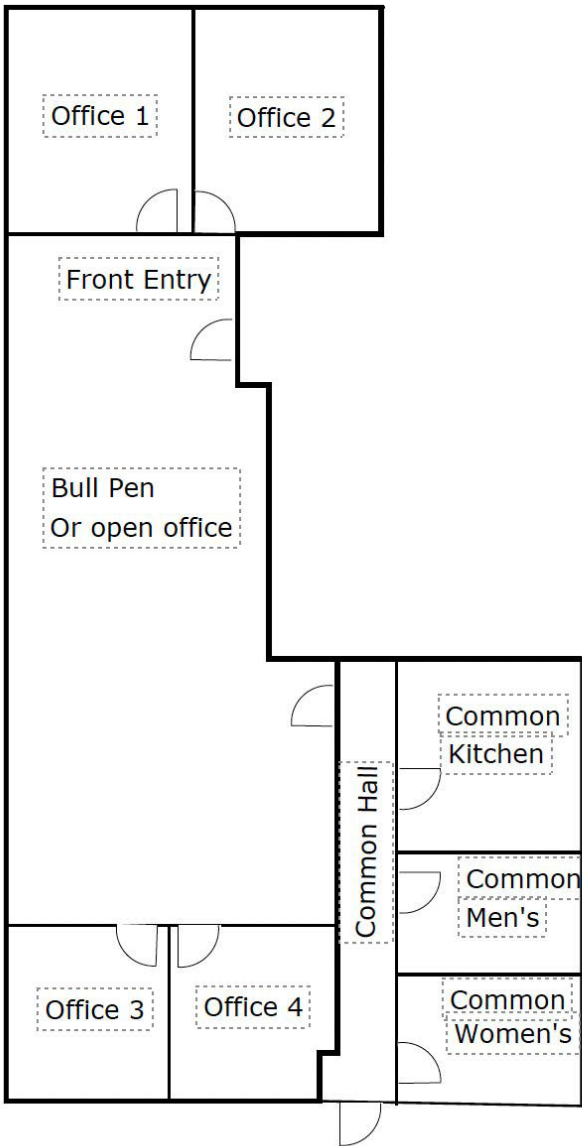
# SmartEquity

Commercial Real Estate and Property Management

**FOR LEASE**

3948 Lindell Blvd  
St. Louis, MO 63110

## SITE PLAN



# Turn-Key Office Immediately Available

BRANDON K. SMART | 314.254.0088 | Brandon@bsmartequity.com

MALIK R. SIMMONS | 314.254.0088 (O) 618.434.0243 (M) | Malik@bsmartequity.com





**SmartEquity**  
Commercial Real Estate and Property Management

**FOR LEASE**  
3948 Lindell Blvd  
St. Louis, MO 63110

**RETAIL MAP**



**Turn-Key Office Immediately Available**

BRANDON K. SMART | 314.254.0088 | Brandon@bsmartequity.com

MALIK R. SIMMONS | 314.254.0088 (O) 618.434.0243 (M) | Malik@bsmartequity.com